

**WARDS  
SEA KING**

**OUTBOARD  
MOTOR**

**PARTS CATALOG**

MW-7

**1967**

**45**

**O.B.C. CERTIFIED BRAKE H.P. AT 4,750 R.P.M.**

**MODELS**

**VWB-27945**

**VWB-27946**

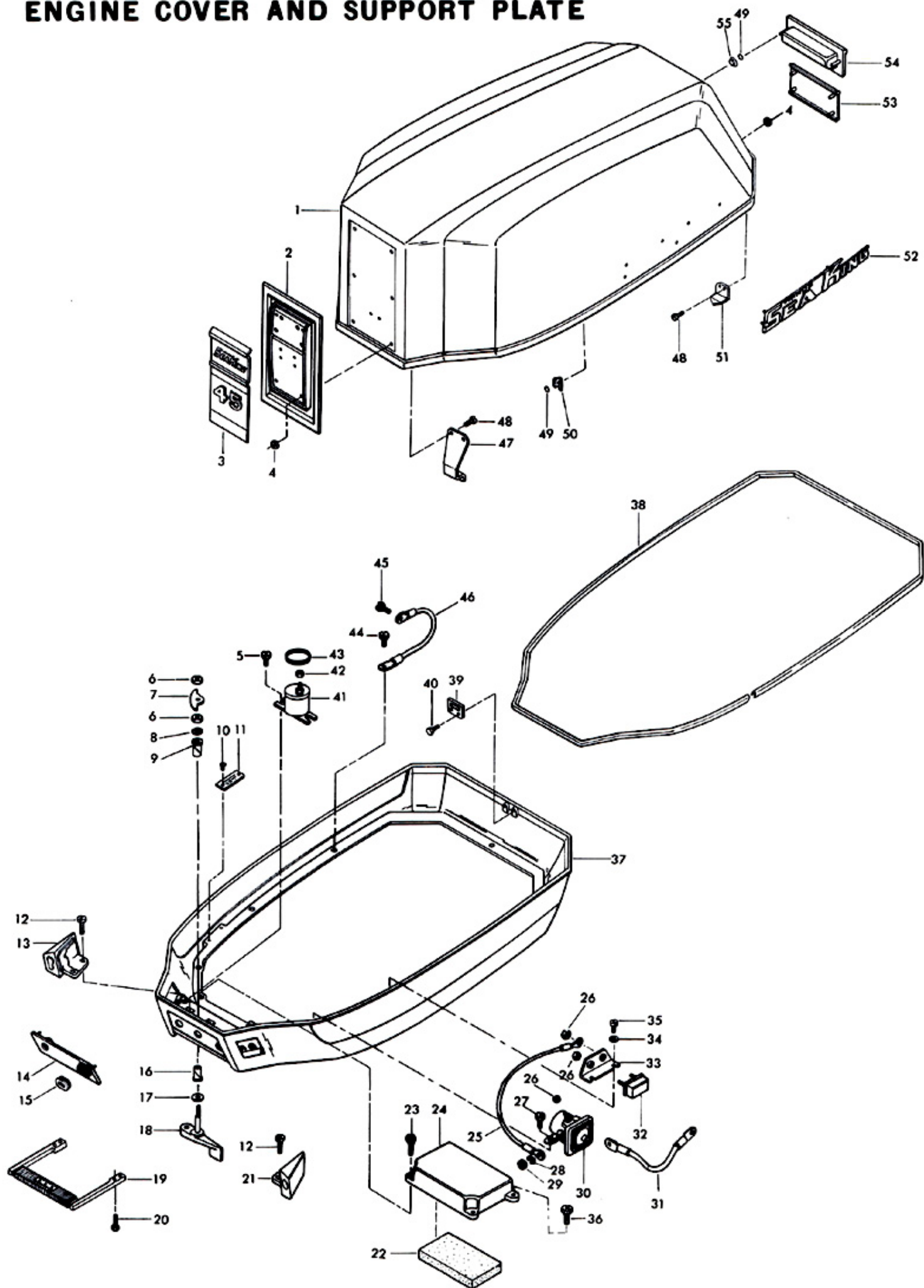
Printed in U.S.A.

**SEA KING**—SOLD EXCLUSIVELY BY **MONTGOMERY WARD**

# Engine Cover and Support Plate

ILLUS. NO.	PART NO.	QTY.	DESCRIPTION	ILLUS. NO.	PART NO.	QTY.	DESCRIPTION
1	A312712	1	Engine cover w/tilt handle, fasteners, and retainer	31	307908	1	Wire, starter
2	309512	1	Plate, front	32	91460-2	1	Circuit breaker
3	309892	1	Plate, Insert "45"	33	91446-1	1	Circuit breaker bracket
4	7011	4	Elastic stop nut, 10 - 24	34	8012	2	Plain washer
5	1241	2	Hex hd screw, 14-20x9/16	35	1075	2	Fill hd screw, 10 - 24 x 1/2
6	1518	2	Hex nut, S.S., 5/16 - 18	36	1201	2	Hex hd mach. screw, 1/4 - 20 x 3/4
7	89777-1	1	Latch cam	37	312038	1	Support plate
8	73741	1	Retaining ring	38	309756	1	Support plate packing
9	307818	1	Bearing, latch shaft	39	312774	1	Bracket, rear retainer
10	1293	2	Drive screw, 2 x 3/16	40	1238	2	Hex cap screw, 1/4 - 20 x 3/4
11	A197395-1	1	Plate, identification	41	289924	1	Choke solenoid
12	1733	4	Pan hd screw, 10 - 24 x 9/16	42	1647	1	Hex nut, 8 - 32
13	312189	1	Bushing, cable entry	43	391983	1	Retaining band
14	312888	1	Panel, support plate	44	1578	1	Hex hd mach. screw and spring lockwasher assy, 1/4 - 20 x 7/8
15	289899	1	Grommet, battery cable entry	45	1578	1	Hex hd mach. screw and spring lockwasher assy, 1/4 - 20 x 7/8
16	307818	1	Bearing, latch shaft	46	381908-1	1	Ground strap
17	8049	1	Spring bowed washer, S.S.	47	312778-1	1	Engine cover retainer, forward
18	A312763	1	Cover latch handle w/shaft	48	1475	4	Fill hd screw, S.S., 10 - 24 x 1/2
19	312647	1	Carrying handle	49	85735	31	Seal
20	1199	4	Hex hd mach. screw, 1/4 - 20 x 1	50	1753	31	Fastener
21	312477	1	Bushing, elec. cable entry	51	A199480-1	1	Engine cover retainer w/screws and nuts
22	307860	1	Intake silencer	52	309366	2	Plate "SEA KING"
23	1198	2	Hex hd mach. screw, 1/4 - 20 x 1	53	309179	1	Trim, rear "45"
24	A307779	1	Baffle, air intake	54	309269	1	Tilt handle
25	307683	1	Wire, circuit breaker	55	9037	2	Fastener
26	1513	5	Hex nut, 10 - 32				
27	1238	7	Hex hd mach. screw, 1/4 - 20 x 3/4				
28	8064	2	Lockwasher				
29	1615	2	Hex nut, S.S., 5/16 - 24				
30	177917	1	Starter relay				

# ENGINE COVER AND SUPPORT PLATE

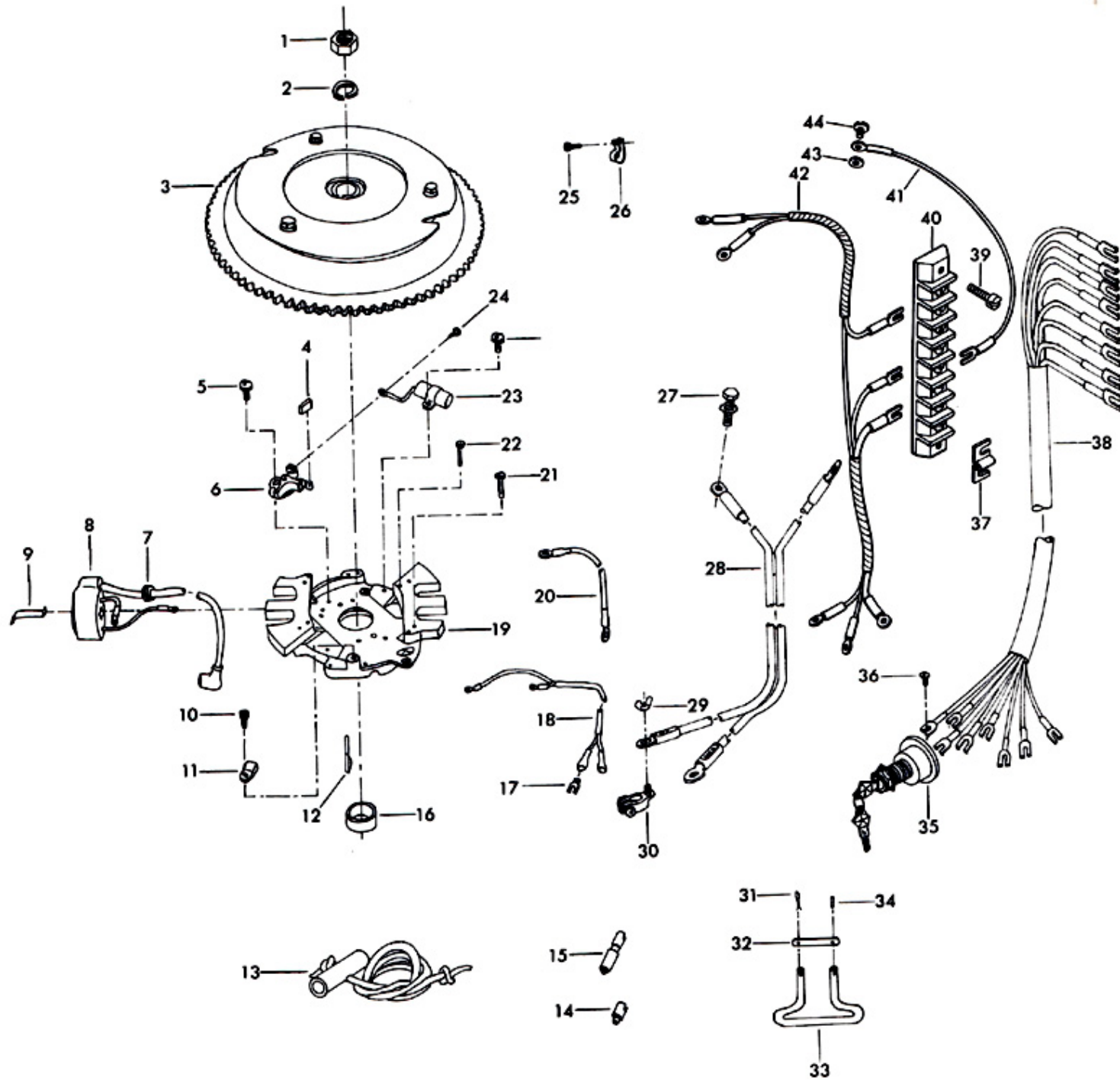


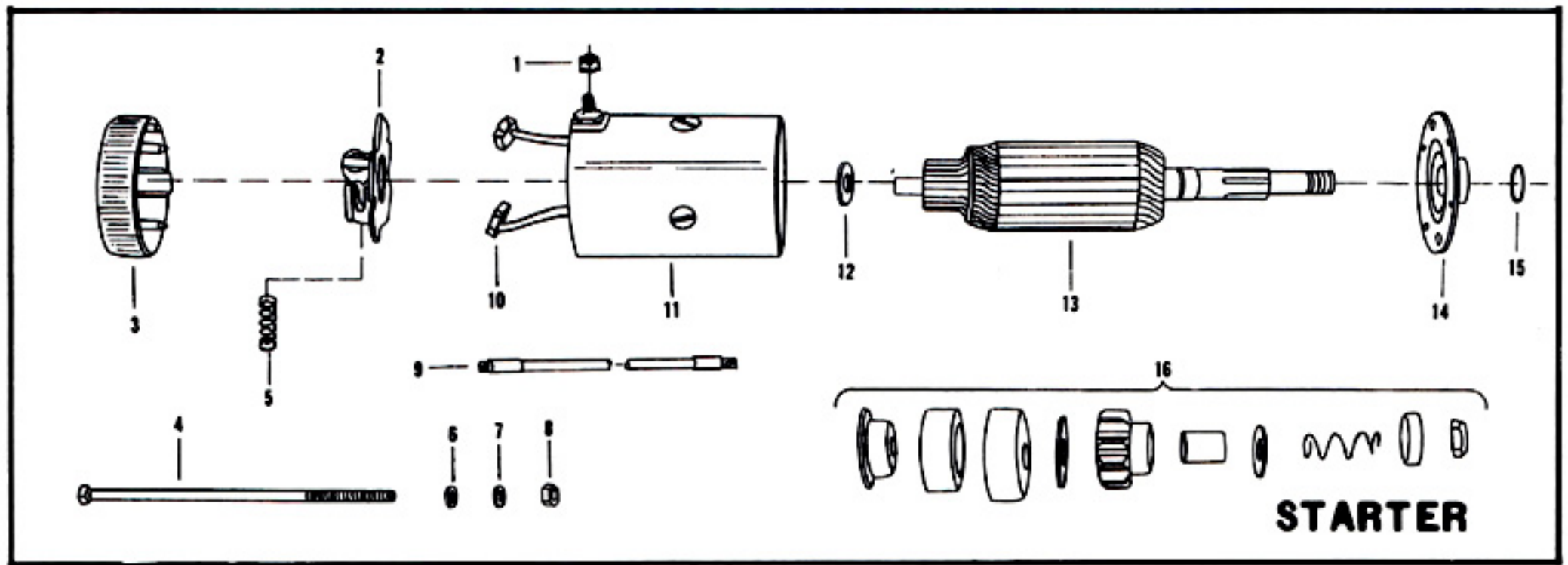


# Electrical and Remote Components

ILLUS. NO.	PART NO.	QTY.	DESCRIPTION
1	1348	1	Hex nut, 5/8 - 18
2	8089	1	Lockwasher
3	12072	1	Flywheel and starter gear (93097)
4	12227	2	Cam wiper felt
5	12014	6	Breaker point and condenser mounting screw, 8 - 32 x 3/8
6	12044	2	Breaker point set
7	12050	2	Grommet
8	12057	2	Coil w/lead wire, sparkie and grommet
9	12053	2	Coil retaining clip
10	12016	1	Cable clip screw, 8 - 32 x 1/2
11	J2471	1	Cable clip
12	92498	1	Key
13	A27232	1	Starter rope w/handle
14	58685-2	1	Connector, shift cable
15	A58976-1	1	Connector, throttle cable
16	12041	1	Cam (93002)
17	296898	2	Male slide terminal
18	12059	1	Primary terminal wire
19	12037	1	Stator plate w/coil condensor, points, lead wires and screws (93095-1)
20	289664	1	Wire, stator ground
21	12023	2	Lamination screw 10 - 24 x 1
22	12017	2	Lamination screw, 8 - 32 x 7/8
23	12042	2	Condenser w/mount
24	12004	2	Breaker arm terminal screw, 6 - 32 x 3/8
25	1082	1	Fill hd thd cutting screw, type 23, 10 - 24 x 3/8
26	92446	1	Clamp
27	1426	1	Hex slot hd screw w/lockwasher, 1/4 - 20 x 7/16
28	381896-4	1	Battery cable
29	389797	2	Wing nut
30	381898	2	Battery terminal
31	1020	1	Cotter pin
32	111694-1	1	Steering bracket latch
33	A111698-1	1	Remote steering bracket w/latch and pins
34	8535	1	Spring pin
35	296918	1	Ignition switch w/keys and mounting nuts
36	1724	5	Pan hd screw, 8 - 32 x 1/4
37	307317	1	Clip terminal block ground
38	85843	1	Electric control cable, 16'
39	1084	2	Fill hd screw 10 - 24 x 5/8
40	289497-1	1	Terminal block
41	307104	1	Thermoswitch wire
42	307744	1	Wiring harness
43	8096	1	Lockwasher
44	1280	1	Pan hd screw, 8 - 32 x 1/4
	FMW-2P-87D	1	Magneto complete, (93062)
			Order component parts
	K-750	2	Sparkie kit (not shown)

# ELECTRICAL AND REMOTE CONTROL COMPONENTS





# Starter

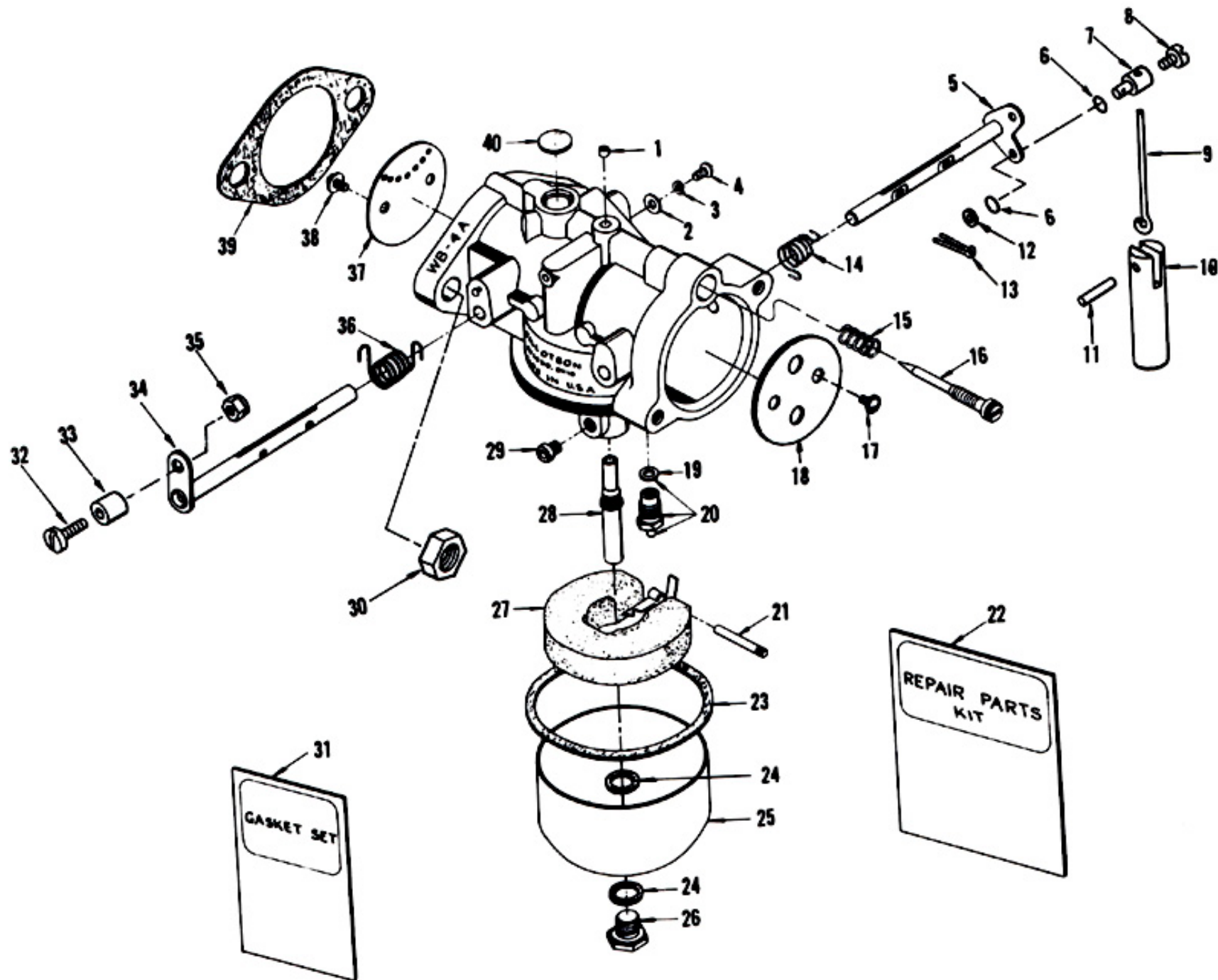
ILLUS. NO.	PART NO.	QTY.	DESCRIPTION	ILLUS. NO.	PART NO.	QTY.	DESCRIPTION
1	15072	1	Hex lock nut 1/4 - 20	9	381908-1	1	Starter lead and ground strap
2	15038	1	Brush plate and holder	10	15042	1	Brush set
3	15037	1	Head assembly, commutator end	11	15043	1	Frame and field assembly
4	15036	2	Thru bolt package	12	15073	1	Thrust washer package
5	15034	1	Spring set	13	15044	1	Armature
6	15074	2	Plain washer	14	15039	1	Head assembly, drive end
7	15060	2	Lockwasher	15	15000	1	'O' ring seal
8	15051	2	Hex nut, 1/4 - 20	16	15013	1	Bendix drive
					A201955	1	Starter motor complete



# Carburetor

ILLUS. NO.	PART NO.	QTY.	DESCRIPTION
1	* 010588	1	Body channel cup plug
2	03804	1	Throttle shaft position retaining screw washer
3	06396	1	Throttle shaft position retaining screw lockwasher
4	06393	1	Throttle shaft position retaining screw
5	014284	1	Choke shaft and lever
6	184579	2	Seal, choke arm swivel
7	184033-1	1	Swivel, choke rod
8	1059	1	Fill hd screw, 6 - 32 x 1/4
9	307925	1	Choke solenoid rod
10	391926-1	1	Choke solenoid plunger
11	8513	1	Gear pin
12	8088	1	Plain washer
13	1014	1	Cotter pin
14	* 013470	1	Choke shaft return spring
15	* 011103	1	Idle mixture screw spring
16	013946	1	Idle mixture screw
17	08942	2	Choke shutter retaining screw and lockwasher
18	013555	1	Choke shutter
19	01065	1	Inlet seat gasket
20	* 010790	1	Inlet needle, seat and gasket
21	* 013944	1	Float lever pin
22	RK-743	1	Repair parts kit, includes all items marked with an asterisk (*)
23	013551	1	Fuel bowl gasket
24	02510	2	Fuel bowl retaining screw gasket
25	013552	1	Fuel bowl
26	013945	1	Fuel bowl retaining screw
27	013554	1	Float
28	* 014286	1	Main nozzle
29	* 012947	1	Main fuel jet (.096)
30	1516	2	Hex nut, 5/16 - 18
31	* GS-188	1	Gasket set
32	269316	1	Throttle roller shaft
33	92759	1	Roller
34	014277	1	Throttle shaft and lever
35	7011	1	Stop nut, 10 - 24
36	* 014292	1	Throttle shaft return spring
37	014282	1	Throttle shutter
38	* 08942	2	Throttle shutter retaining screw and lockwasher
39	013978	1	Flange gasket
40	* 04326	1	Body channel welch plug
	310061	1	Carburetor complete, (WB-4A) (not shown)

# CARBURETOR

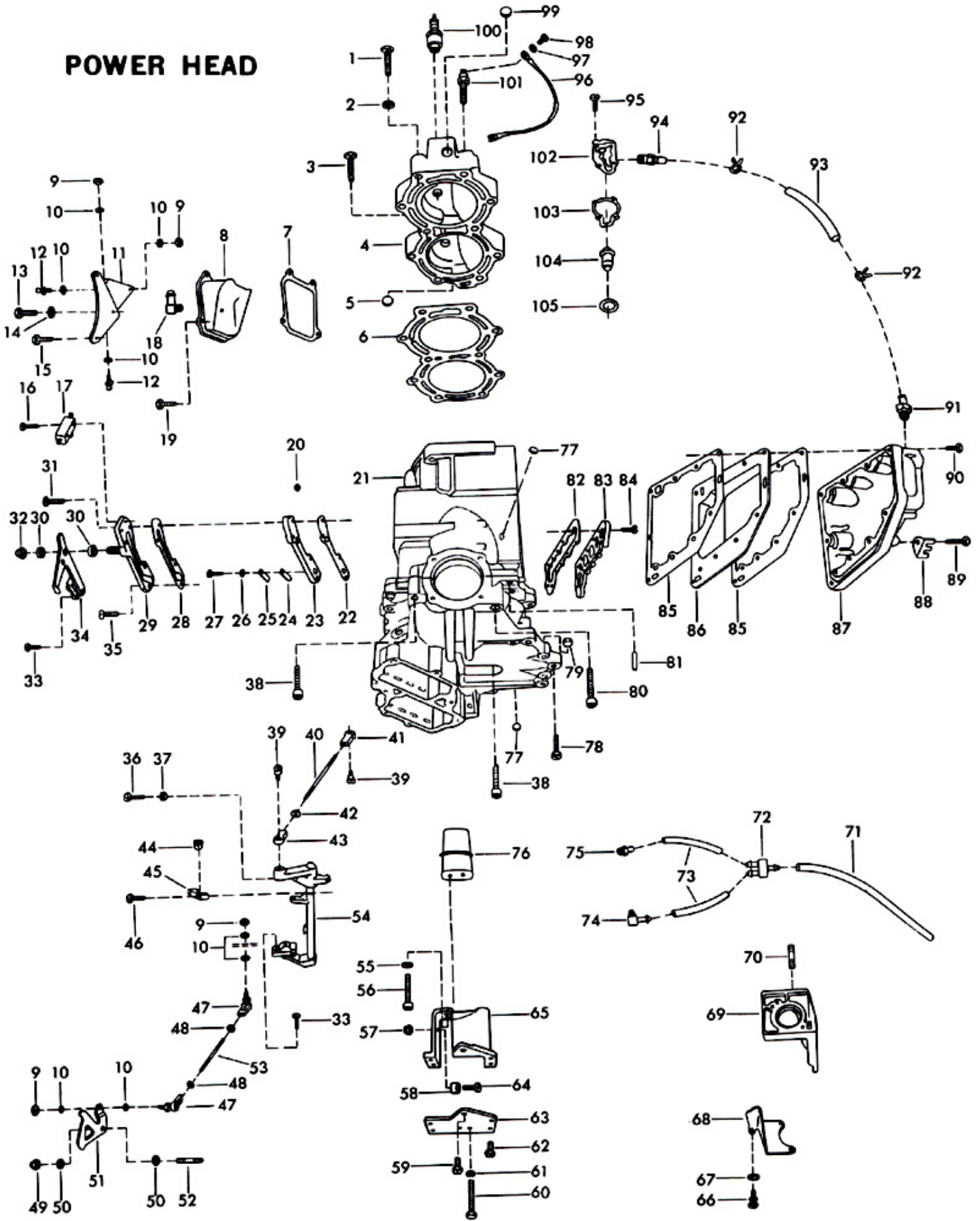




# Power Head

ILLUS. NO.	PART NO.	QTY.	DESCRIPTION	ILLUS. NO.	PART NO.	QTY.	DESCRIPTION
1	1544	8	Hex hd cap screw, 3/8 - 16 x 2 - 1/4	64	1771	2	Fill hd screw 8 - 32 x 5/8
2	8039	9	Plain washer	65	307956	1	Shock mount upper engine bracket
3	1184	1	Hex hd cap screw, 3/8 - 16 x 2 - 1/2	66	1580	2	Hex slot hd screw w/lock-washer, 1/4 - 20 x 1 - 1/8
4	A88518	1	Cylinder head w/welch plug	67	8025	2	Plain washer
5	1526	1	Welch plug	68	89675-1	1	Starter mounting bracket, lower
6	201529-1	1	Cylinder head gasket	69	312427	1	Starter mounting bracket
7	40223	2	Transfer port cover gasket	70	307211	3	Stud
8	89222	2	Transfer port cover	71	2771254	1	Crankcase drain line (long)
9	1340	4	Hex nut, 10 - 32	72	A287922	1	Check valve "Y" fitting w/ drain lines
10	8058	8	Int tooth lockwasher	73	A287922	1	Crankcase drain lines (short) w/"Y" fitting and check valves
11	267371	1	Connector stud bracket	74	A213314	1	Elbow
12	98273	2	Rod end connector stud	75	A141801	1	Drain fitting
13	1578	2	Hex slot hd screw, 1/4 - 20 x 7/8	76	203965	1	Shock mount upper
14	8087	1	Plain washer	77	1524	2	Welch plug
15	1238	1	Hex slot hd screw, 1/4 - 20 x 3/4	78	* 1201	12	Hex slot hd screw 1/4 - 20 x 3/4
16	1654	2	Fill hd screw, 6 - 32 x 7/8	79	1516	3	Hex nut, 5/16 - 18
17	84449	1	Switch, neutral interlock	80	* 1646	1	Hex socket hd cap screw, 3/8 - 16 x 2 - 1/4
18	84314	2	Elbow, fuel line	81	* 8559	2	Dowel pin
19	1481	4	Hex slot hd screw, 1/4 - 20 x 9/16	82	40867	1	Exhaust water jacket cover gasket
20	93811	2	Screen, cylinder drain reed plate	83	40866	1	Exhaust water jacket cover
21	* A310010	1	Cylinder w/crankcase cover, deflector plate, screws	84	1088	12	Fill hd screw, S.S., 10 - 24 x 9/16
22	93748-1	1	Cylinder drain reed plate gasket	85	40154-2	2	Exhaust port plate gasket
23	A93757	1	Cylinder drain reed plate w/ reeds, reed stops, screws and screen	86	40151-1	1	Exhaust port plate
24	18160-1	2	Reed, cylinder drain	87	97152-4	1	Exhaust port cover
25	93920	2	Cylinder drain reed stop	88	901834	1	Lead wire clip
26	8003	2	Plain washer	89	1660	5	Hex hd screw, 1/4 - 20 x 2 - 1/8
27	1286	2	Pan hd screw, 4 - 40 x 3/16	90	1223	4	Hex slot hd screw, 1/4 - 20 x 1 - 1/8
28	93472-1	1	Cylinder drain cover gasket	91	141275	1	Fitting, thermostat
29	269471	1	Cylinder drain cover	92	97772	2	Clamp
30	269052	2	Shift arm bearing	93	97247-1	1	Water tube, thermostat
31	1198	2	Hex slot hd screw, 1/4 - 20 x 1	94	97275	1	Fitting, thermostat
32	7004	1	Stop nut, 7/16 - 20	95	1069	3	Fill hd screw, 10 - 24 x 1 - 1/16
33	1083	2	Fill hd screw w/lockwasher 10 - 24 x 3/8	96	307104	1	Thermoswitch wire
34	A269876	1	Shift arm w/clamp and swivel	97	8096	1	Lockwasher
35	1136	2	Flat hd screw, 1/4 - 20 x 1	98	1280	1	Pan hd screw, 8 - 32 x 1/4
36	1111	1	Fill hd screw, 1/4 - 20 x 7/8	99	1528	1	Welch plug
37	1514	1	Hex jam nut, 1/4 - 20	100	78227	2	Spark plug (J - 4 - J)
38	* 1254	3	Hex socket hd cap screw, 3/8 - 16 x 1 - 3/4	101	289449	1	Thermoswitch
39	84026	2	Spark control swivel	102	97066	1	Thermostat cover
40	307445	1	Spark control link	103	97067	1	Thermostat cover gasket
41	84036	1	Spark control bearing, L.H.	104	97068-1	1	Thermostat
42	1339	1	Hex nut, 10 - 24	105	97504	1	Grommet, thermostat
43	84035-2	1	Spark control bearing R.H.		269122	1	Crankcase parting line seal (not shown)
44	269689	2	Bearing, tower shaft		K-734	1	Engine touch-up paint (6 oz. spray bomb)
45	269665	2	Tower shaft bearing cap		K-738	1	Frost White Flat
46	1084	4	Fill hd screw, 10 - 24 x 5/8		G-456	1	Engine touch-up paint (6 oz. spray bomb)
47	A269141	2	Ball joint w/bearing		C310010	1	Mustang Grey
48	1340	2	Hex nut, 10 - 32				Gasket set (not shown)
49	7008	1	Elastic stop nut, 1/4 - 20				Cylinder complete, includes all items marked with an asterisk (*). Also refer to crankshaft page.
50	269319	2	Throttle cam bearing				
51	307192	1	Throttle cam				
52	27209	1	Stud, throttle cam				
53	269193	1	Throttle link				
54	A307838	1	Tower shaft w/clamp and swivel				
55	8065	2	Lockwasher				
56	1253	2	Hex socket hd cap screw 3/8 - 16 x 2				
57	1770	2	Stop nut, 8 - 32				
58	307942	2	Bumper				
59	1709	1	Hex hd screw 1/4 - 20 x 1 - 1/8				
60	1101	2	Fill hd screw w/lockwasher, 1/4 - 20 x 1 - 3/4				
61	8063	2	Lockwasher				
62	1502	4	Hex hd screw 1/4 - 20 x 5/8				
63	307946	1	Shock mount upper, cover				

# POWER HEAD





# **Crankshaft and Piston Group**

ILLUS. NO.	PART NO.	QTY.	DESCRIPTION
1	* A90260	1	Piston ring set (6 per set)
2	* 3A93015-2	2	Piston w/piston pin bearing
3	* 40017	2	Piston pin
4	* A84016-1	2	Connecting rod w/cap and screws
5	* 85634	4	Connecting rod screw
6	* A85228	3	Bearing cage w/rollers (16 per set)
7	* 4016-1	2	Crankshaft seal
8	* 90014	1	Crankshaft lower main bearing
9	* 2A269018	1	Crankshaft w/bearing
10	* A40655	1	Crankshaft center main bearing w/snap ring
11	* 40410	1	Snap ring
12	40278	1	Bearing cage seal
13	A213144-1	1	Crankshaft bearing cage w/seal
14	1158	4	Flat hd screw, 1/4 - 20 x 7/8
15	73082	1	Magneto stator ring
16	1071	2	Fill hd screw w/lockwasher, 10 - 24 x 1 1/2
17	1080	1	Fill hd screw w/lockwasher, 10 - 24 x 3/4
18	1070	1	Fill hd screw w/lockwasher, 10 - 24 x 1 - 1/16
19		1	Crankshaft thrust bearing upper, not sold separately, contact factory for authorization to return crankshaft to factory for bearing replacement.

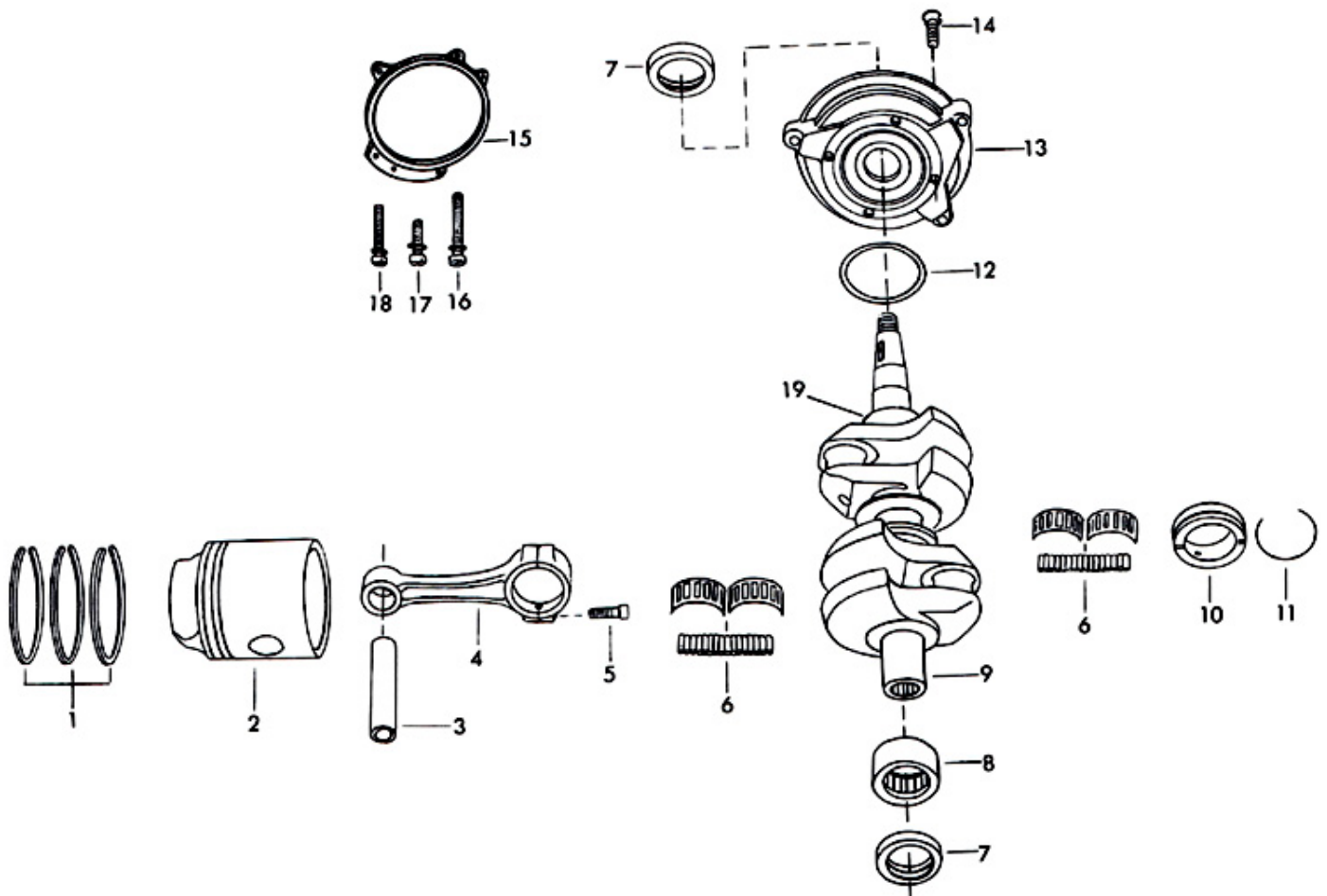
\* Indicates Contents of Cylinder Complete. Also Refer to Power Head Page.

## **Reed Plate**

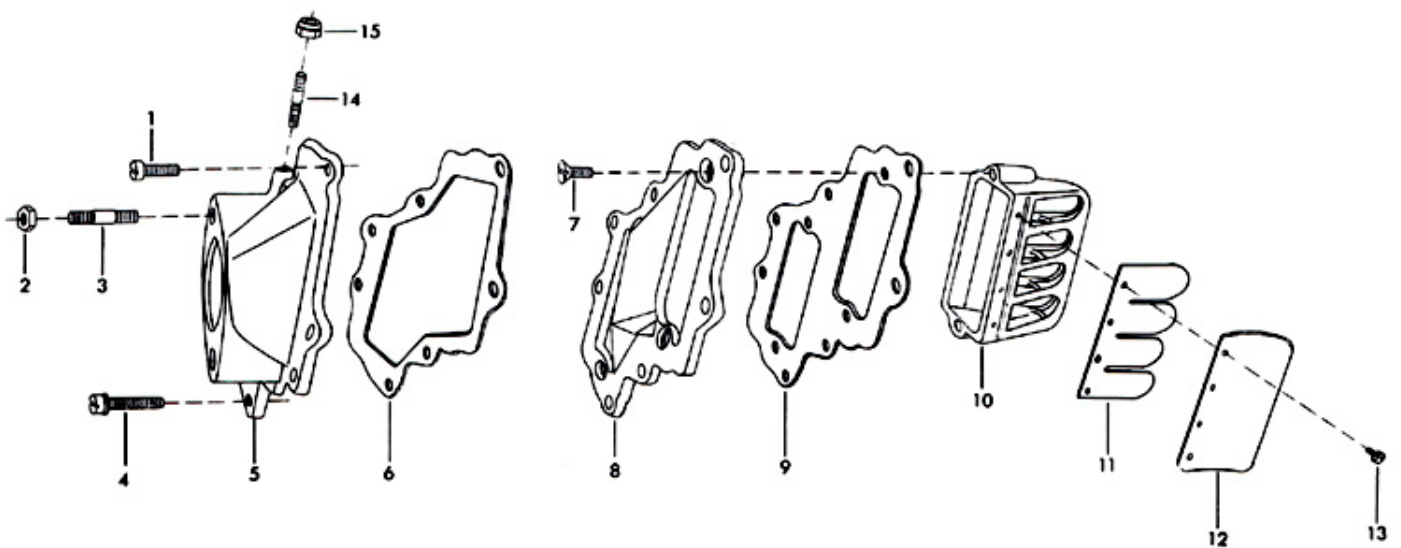
ILLUS. NO.	PART NO.	QTY.	DESCRIPTION
1	1240	5	Hex hd screw, 1/4 - 20 x 7/8
2	1516	2	Hex nut, 5/16 - 18
3	40209	2	Carburetor stud
4	1580	2	Fill hd screw w/lockwasher, 1/4 - 20 x 1 - 1/8
5	307167	1	Carburetor adapter flange
6	307168	1	Carburetor adapter gasket
7	1486	4	Flat hd screw, 1/4 - 20 x 5/8
8	88404-1	1	Deflector plate
9	307406	1	Deflector plate gasket
10	A88158-1	2	Reed plate w/reeds, stops and screws
11	88160	4	Reed
12	88161-2	4	Reed stop
13	1298	16	Rd hd screw w/lockwasher, 6 - 32 x 1/4
14	27209	1	Stud
15	7008	1	Stop nut, 1/4 - 20



## CRANKSHAFT AND PISTON GROUP



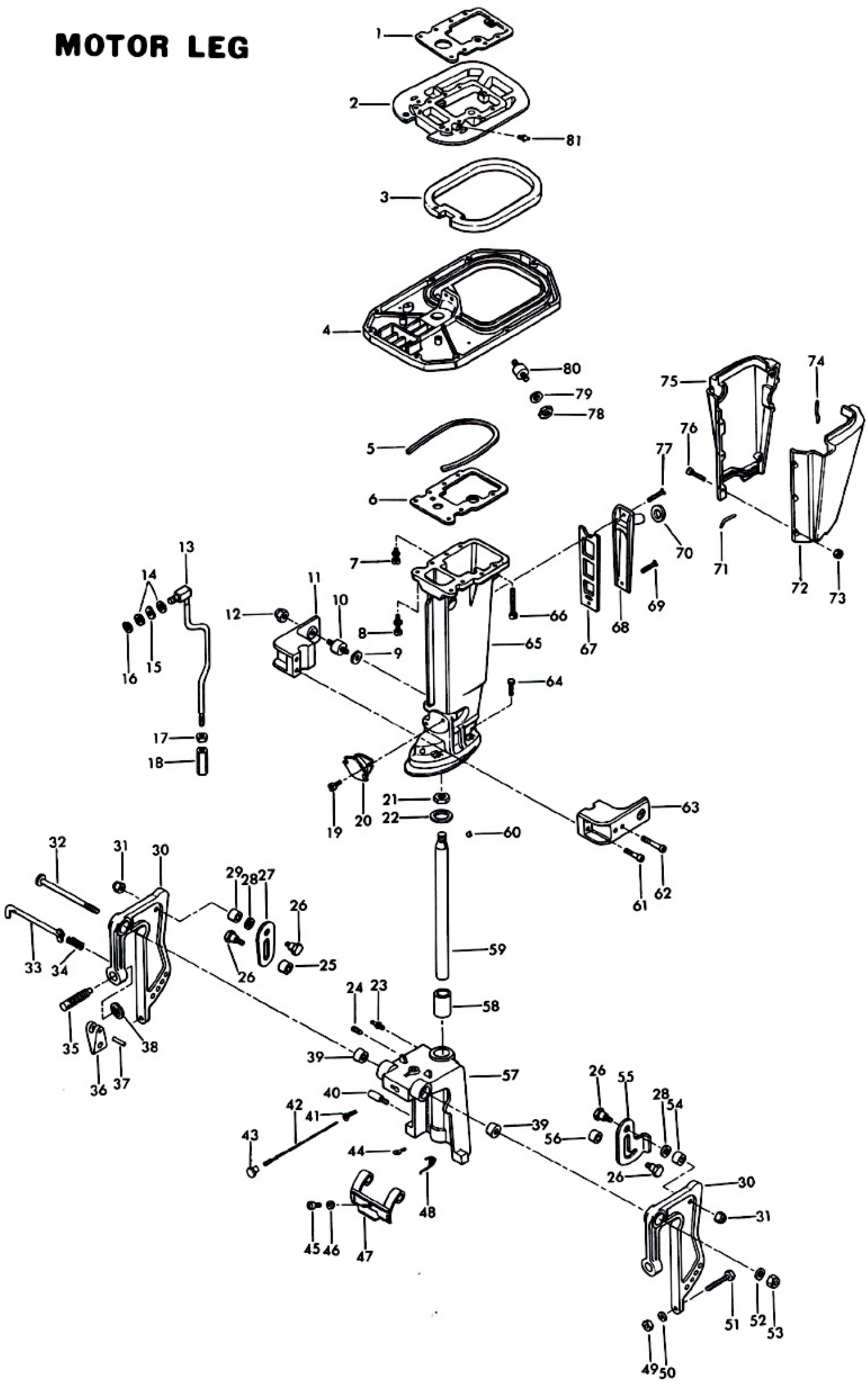
## REED PLATE



# Motor Leg

ILLUS. NO.	PART NO.	QTY.	DESCRIPTION	ILLUS. NO.	PART NO.	QTY.	DESCRIPTION
1	307279	1	Cylinder exhaust gasket upper	44	307487	1	Cable guide
2	307680	1	Spacer plate	45	1556	1	Fill hd screw, S.S., w/lock-washer, 10 - 24 x 3/8
3	307989	1	Seal, king pin plate	46	8011	1	Plain washer
4	307940	1	King pin plate	47	A88263	1	Reverse lock
5	307025	1	Dampening pad	48	88300	2	Reverse lock spring
6	307453	1	Cylinder exhaust gasket lower	49	1346	2	Hex nut, S.S., 3/8 - 16
7	1474	2	Fill hd screw w/lockwasher 5/16 - 18 x 1 - 3/4	50	8038	2	Plain washer
8	1478	6	Fill hd screw w/lockwasher 5/16 - 18 x 2	51	1593	2	Hex hd screw, S.S., 3/8 - 16 x 3
9	137416	2	Shock mount spacer	52	1656	1	Plain washer
10	A215962	2	Shock mount side lower w/spacer	53	7001	1	Elastic stop nut
11	203972-1	1	Shock mount lower cover, starboard	54	269929	1	Spacer, tilt stop
12	1326	2	Acorn nut, S.S., 5/16 - 18	55	269426	1	Tilt stop port
13	307615	1	Gear shift rod upper	56	269929	1	Spacer, tilt stop
14	8035	2	Plain washer	57	A307072-1	1	Swivel bracket w/bearings and grease fitting
15	8049	1	Bowed spring washer	58	191169-1	2	Swivel bracket bearing
16	185764	1	Retaining ring	59	A307019	1	King pin w/welch plug
17	1349	1	Hex nut, S.S., 5/16 - 18	60	9039	1	Woodruff key #7, S.S.
18	141704	1	Gear shift rod coupling	61	1636	2	Hex socket hd cap screw, S.S. 3/8 - 16 x 1 - 1/4
19	1129	4	Fill hd screw, S.S., 5/16 - 18 x 1/2	62	1635	2	Hex socket hd cap screw, S.S., 3/8 - 16 x 3 - 1/2
20	183346	1	Shock mount, lower	63	203973-1	1	Shock mount lower cover, port
21	84280	1	King pin nut	64	1477	4	Hex hd cap screw, S.S. 3/8 - 16 x 1 - 9/16
22	89011	1	Swivel bracket washer	65	307133-1	1	Motor leg
23	213274	1	Grease fitting	66	1476	1	Fill hd screw, 1/4 - 20 x 1 - 1/8
24	1659	1	Socket hd set screw, oval point 1/4 - 28 x 1/4	67	40833-3	1	Motor leg exhaust cover gasket
25	269929	1	Spacer, tilt stop	68	89832-1	1	Motor leg exhaust cover
26	269350	4	Tilt stop pivot	69	1138	1	Flat hd screw 1/4 - 20 x 1
27	269433	1	Tilt stop, starboard	70	89504	1	Grommet motor leg exhaust cover
28	1666	2	Bowed spring washer	71	89323	2	Packing, leg cover lower
29	269929	1	Spacer, tilt stop	72	89135-4	1	Motor leg cover port
30	A269532	2	Stern bracket w/clamp screw	73	1473	6	Hex nut, 10 - 24
31	7007	2	Stop nut	74	89321	2	Packing, leg cover upper
32	93037	1	Stern bracket pivot bolt	75	89145-4	1	Motor leg cover starboard
33	A40113-4	1	Stern bracket lock bar w/end and spring	76	1088	6	Fill hd screw, 10 - 24 x 9/16
34	213380	1	Spring, lock bar	77	1584	2	Flat hd screw, S.S., 1/4 - 20 x 1 - 3/8
35	A93073-2	2	Clamp screw w/foot	78	1346	2	Hex nut, 3/8 - 16
36	53075-1	2	Clamp screw handle	79	8038	2	Plain washer
37	1638	2	Spring pin	80	307962	2	Shock mount, side upper
38		2	Clamp screw foot, order A93073-2 clamp screw	81	A141801	1	Drain fitting
39	93928	2	Stern bracket friction cone				
40	88350	2	Reverse lock pin				
41	85884	1	Detent, reverse lock release				
42	A307586	1	Reverse control release wire				
43	91507	1	Knob				

# MOTOR LEG

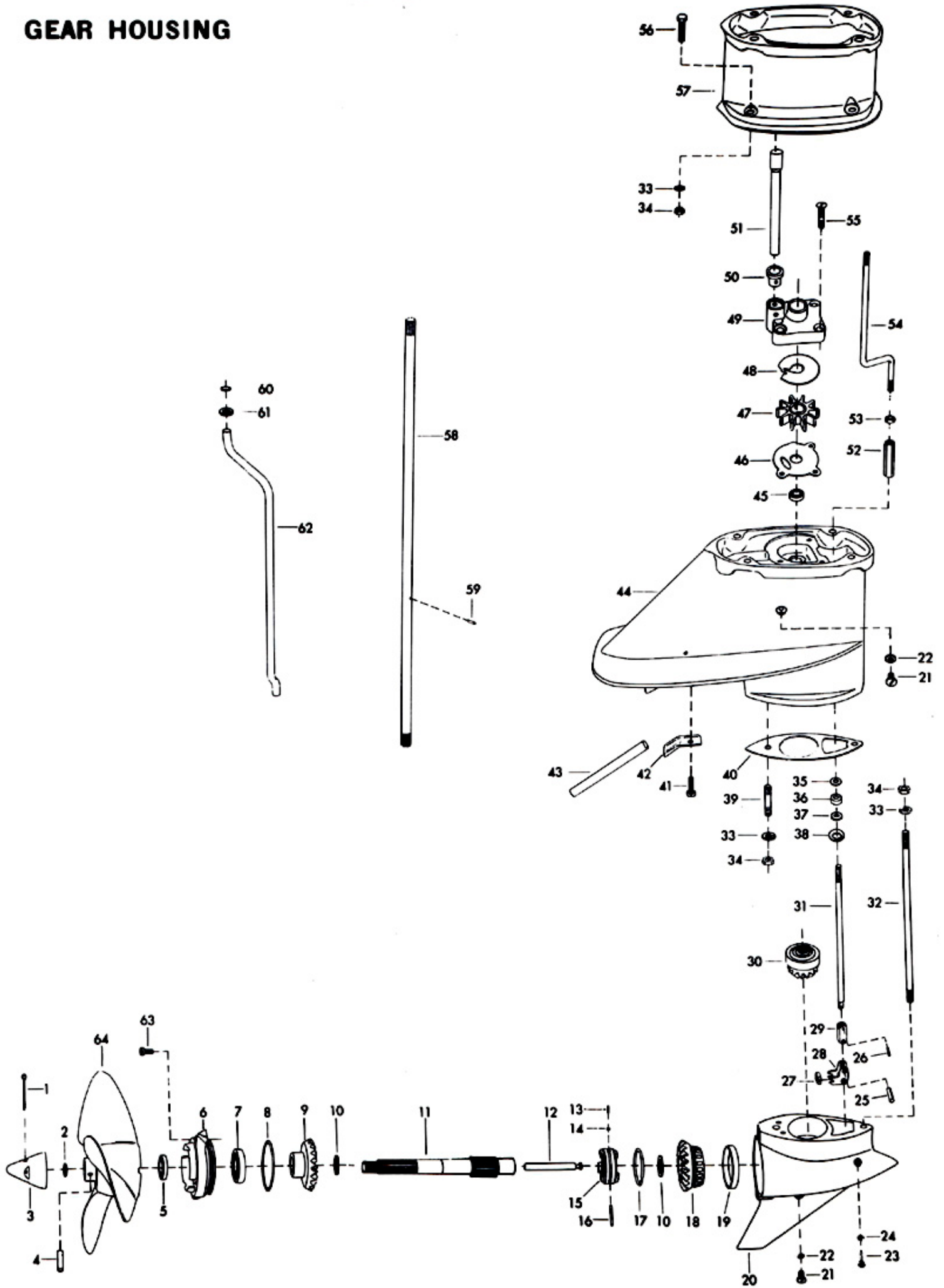




# Gear Housing

ILLUS. NO.	PART NO.	QTY.	DESCRIPTION
1	1027	1	Cotter pin, S.S., 1/8 x 1-1/2
2	40342	1	Seal, propeller nut
3	A94094-1	1	Propeller nut w/seal and cotter pin
4	K-247	1	Propeller pin, pack of 6 w/cotter pin
5	141118	1	Seal, propeller shaft
6	* A141298	1	Propeller shaft bearing cage w/bearing and seal
7	* 127910-1	1	Ball bearing, propeller shaft
8	* 141305	1	Seal, propeller shaft bearing cage
9	* A99662	1	Bevel gear rear w/bushing
10	* 40717	2	Thrust washer, bevel gear
11	* 287098	1	Propeller shaft
12	* A90871-2	1	Gear shift pin w/yoke
13	* 90719	1	Spring, clutch detent ball
14	* 90727	1	Ball, clutch detent
15	* 99521	1	Clutch
16	* 8568	1	Spring pin
17	* 90733-1	1	Retaining ring clutch pin
18	* 2A99023	1	Bevel gear front w/bearing
19	* 40250	1	Propeller shaft thrust bearing cup
20	* A141054	1	Gear housing lower w/plug, washer, thrust bearing cup
21	* 50109	2	Plug, gear housing
22	* 8077	2	Washer, gear housing plug
23	* 90891	1	Gear shift arm pin
24	* 8001	1	Nyltite washer
25	* 8554	1	Spring pin
26	* 8545	1	Spring pin
27	* A90871-2	1	Gear shift arm yoke w/pin
28	* A90621	1	Gear shift arm w/bushing
29	* 90263	1	Coupling, shift arm
30	* A46266	1	Bevel pinion w/bearing
31	* 97705	1	Gear shift rod lower
32	97008-1	1	Stud, long
33	8065	6	Lockwasher, S.S.
34	1346	6	Hex nut, S.S., 3/8 - 16
35	19272	1	Seal retainer
36	901618-2	1	Seal, shift rod lower
37	50670	1	Spacer, shift rod seal
38	901671	1	Retainer, shift rod seal
39	40008	1	Stud short
40	40555	1	Gasket, gear housing
41	1055	1	Fill hd screw S.S., 1/4 - 20 x 1
42	40706-1	1	Inlet water plate
43	40773	1	Inlet water tube
44	A93554	1	Gear housing upper w/seal, washer, plug, inlet water tube
45	40307-2	1	Seal, drive shaft
46	144562-1	1	Water pump back plate
47	40065-1	1	Water pump impeller
48	144537	1	Water pump top plate
49	A144060	1	Water pump body w/seal
50	93914	1	Seal, inlet water line lower
51	S40244-1	1	Inlet water line extension for model VWB-27936
52	97704	1	Coupling, gear shift rod, lower
53	1341	1	Hex nut, S.S., 1/4 - 20
54	97616	1	Gear shift rod intermediate, for model VWB-27945
	109616	1	Gear shift rod intermediate, for model VWB-27946
55	1149	3	Flat hd screw, S.S., 1/4 - 20 x 1 - 1/4
56	1477	4	Hex bolt, S.S., 3/8 - 16 x 1 - 9/16
57	93845-2	1	Motor leg extension for model VWB-27946
58	191128	1	Drive shaft for model VWB-27945
	89128	1	Drive shaft for model VWB-27946
59	901563	1	Water pump impeller drive pin
60	40342	1	Seal
61	8042	1	Plain washer
62	141244	1	Inlet water line
63	* 1263	2	Hex socket hd cap screw, S.S., 5/16 - 18 x 9/16
64	A287265	1	Propeller
	C287054	1	Gear housing, lower, complete, includes all items marked with an asterisk (*)

# GEAR HOUSING



# Fuel Pump, Fuel Tank and Line

ILLUS. NO.	PART NO.	QTY.	DESCRIPTION
1	90753	1	Fuel line, pump to carburetor
2	2706772	2	Fuel line clamp
3	40314-1	1	Elbow
4	A89650	1	Fuel sediment bail and nut
5	89500	1	Fuel sediment bowl
6	84617	1	Fuel sediment bowl gasket
7	84653	1	Fuel sediment bowl screen
8	A177431-2	1	Fuel pump body w/valves
9	1578	1	Hex slot hd screw, 1/4 - 20 x 7/8
10	1156	1	Flat hd screw, 1/4 - 20 x 1/2
11	1241	2	Hex hd screw, 1/4 - 20 x 9/16
12	201432	1	Fuel pump mounting bracket
13	89758	2	Fuel pump air hose
14	84314	3	Elbow
15	1050	6	Fill hd screw, 10 - 24 x 1
16	84746	1	Fuel pump cover
17	A84747	1	Fuel pump diaphragm w/gasket
18	84760	1	Fuel pump gasket
19	1299	2	Rd hd screw, 6 - 32 x 1/4
20	177330	3	Fuel pump valve
21	84792	3	Fuel pump valve gasket
22	97772	1	Fuel line clamp
23	A197752-1	1	Fuel line long w/clamps
24	298788	3	Ferrule
25	298769	2	Prime bulb adapter
26	298766	1	Fuel line prime bulb
27	A84754-1	1	Fuel line w/clamps
28	197787-2	1	Fuel line coupler
29	213735	1	Seal, fuel line coupler (small)
30	213342	1	Seal, fuel line coupler (large)
31	307755	1	Fuel tank adapter
32	A77034-2	1	Fuel tank w/gauge cap
33	213251	1	Fuel tank gauge cap
	A289752	1	Fuel supply line complete w/coupler
	224394-1	1	Decal, fuel mixture (not shown)





# Specifications

**HORSEPOWER** -- 45 O.B.C. Certified Brake H.P. at 4750 R.P.M.

**MOTOR** -- Two-Cycle Twin Cylinder Alternate Firing.

**BORE AND STROKE** -- 3-1/8" Bore x 2.750" Stroke.

**DISPLACEMENT** -- 42.18 Cubic Inches.

**CONNECTING RODS** -- Nickel Steel. Caged Needle Bearings at Crankshaft. Cased Needle Bearings at Piston Pin.

**CORROSION PROTECTION** -- Lyfanite Treated Castings Stainless Steel Drive Shaft, Propeller Shaft, Gear Shift Rod and Underwater Fasteners.

**CRANKSHAFT** -- Nickel Steel.

**STARTER** -- Electric, 12 Volt.

**FUEL TANK** -- Separate Steel Tank, 6 U.S. Gallons (5 Imperial Gallons)

**FUEL SYSTEM** -- Vacuum Type Fuel Pump. Float Feed Carburetor with Fixed High Speed Jet and Adjustable Low Speed Jet.

**FUEL FILTERS** -- Filter Screens in Fuel Tank and Fuel Pump.

**COOLING** -- Water Cooled, Thermostatically Controlled, Recirculating Positive Displacement Type Water Pump.

**TRANSOM HEIGHT** -- 15" or 20" Depending on Model.

**WEIGHT** -- From 134-142 Lbs. for Standard Shaft Models.

**TILT LOCK** -- Positive Tilt Lock Permits Engine to Remain in Tilted Position When Not in Use.

**RECOMMENDED OPERATING RANGE** -- 4400-5100 R.P.M.

## LUBRICATION CHART

**LOWER GEAR HOUSING** -- Check After Every Thirty (30) Hours of Operation and Replace After Every 100 Hours with a Non-Corrosive Leaded Outboard Gear Oil - EP90, such as Wards Sea King Hypoid Outboard Gear Oil - #60-9118 or equivalent. DO NOT USE A CORROSIVE HYPOID OIL UNDER ANY CIRCUMSTANCES.

**CONTROL LINKAGE** -- Lubricate All Moving Parts and Control Linkage with Riverside Two-Cycle Engine Oil or SAE 30 Oil Twice Each Season or Oftener if Required.

**STERN BRACKET** -- Lubricate Stern Bracket and Associated Parts with Riverside Two-Cycle Engine Oil or SAE 30 Oil Twice each Season or Oftener if Required.

**GREASE FITTINGS** -- Grease Fittings Are Provided at Critical Points Where Bearing Surfaces Are Not Exposed Externally. Using an Automotive Type Grease Gun and Lubricant, Grease Twice Each Season or Oftener if Required.

**STARTER PINION GEAR** -- Lubricate With Rykon #2 EP, Part No. K-65, Twice Each Season or Oftener if Required.

## SPECIAL ADJUSTMENTS

**BREAKER POINT GAP** -- .020".

**SPARK PLUG** -- Champion (J-4-J), Gap .030".

**FLYWHEEL NUT** -- Torque to 70 Foot Pounds.

**CYLINDER HEAD BOLT** -- Torque to 270 Inch Pounds.

**POINT OF THROTTLE OPENING** -- With The Throttle Cam Follower Roller on the Index Mark of the Throttle Cam and All Slack Removed From the Linkage, There Will Be .010" to .020" Clearance Between Cam and Roller.